

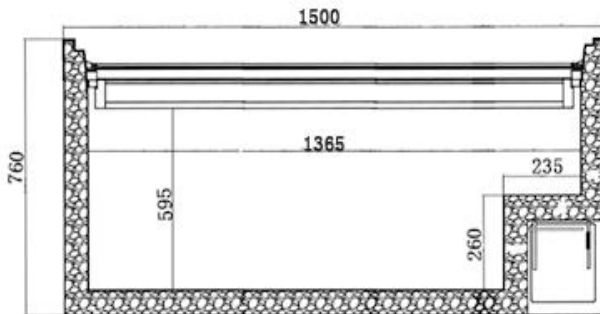
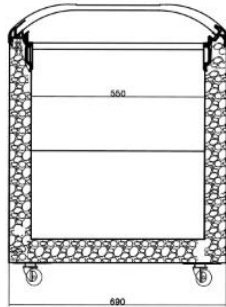
Specifications



1800374343

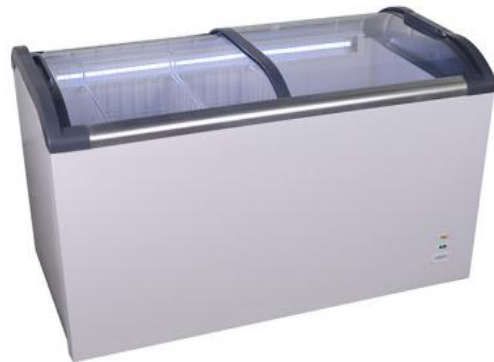
ADQ-500

Chest Freezer



CABINET DIMENSIONS

| | |
|--------------------|---------------------|
| | External |
| Height: | 850mm |
| Width: | 1500mm |
| Depth: | 695mm |
| Floor area: | 1.04 m ² |



CABINET SPECIFICATIONS

| | |
|-----------------------------------|---|
| Refrigeration system: | Static Cooling System |
| Refrigerant / Charge: | R290 |
| Energy consumption: | 3.6KWh/24h |
| Gross volume(L): | 445L |
| Lid type : | Both-side curved Sliding doors |
| Glass door: | Single Low-e |
| Cabinet temperature range: | ≤-18~-22°C |
| Electrical: | 220-240 Volts a.c. 50 Hz, 15Amp Australian plug |
| Power cord length: | 2.5m |
| Internal lighting: | 1LED |
| Thermostat: | Mechanical |
| Inside cabinet: | White Pre-Painted Aluminium Sheet |
| Basket(Pvc coating): | 5 |
| Feet: | Wheel, front two brake |
| Insulation: | 70mm polyurethane foam |
| Total weight: | 75kg |

Austune Australia Pty Ltd reserve the right to alter specifications without notice.

Austune Australia Pty Ltd

Unit 3, 35 Davis Road Wetherill Park NSW 2164

Tel: 02 9725 1578